



PT DWIWIRA LESTARI JAYA

PT Dwiwira Lestari Jaya Additional Response on Peer Review Process of HCSA Assessment

PT Dwiwira Lestari Jaya (DLJ) has carried out HCSA Assessment in October 2016 as a commitment to take a precautionary approach on its operational area using HCSA Toolkit Ver1. The assessment was conducted by registered and trained HCSA Assessor with a high experiences and credibility related to forest inventory and mapping and also carbon stock inventory. The consultant has also have a good exercises in the preparation of HCSA reports, with a total of 2 HCS reports previously received by HCSA Review Panel.

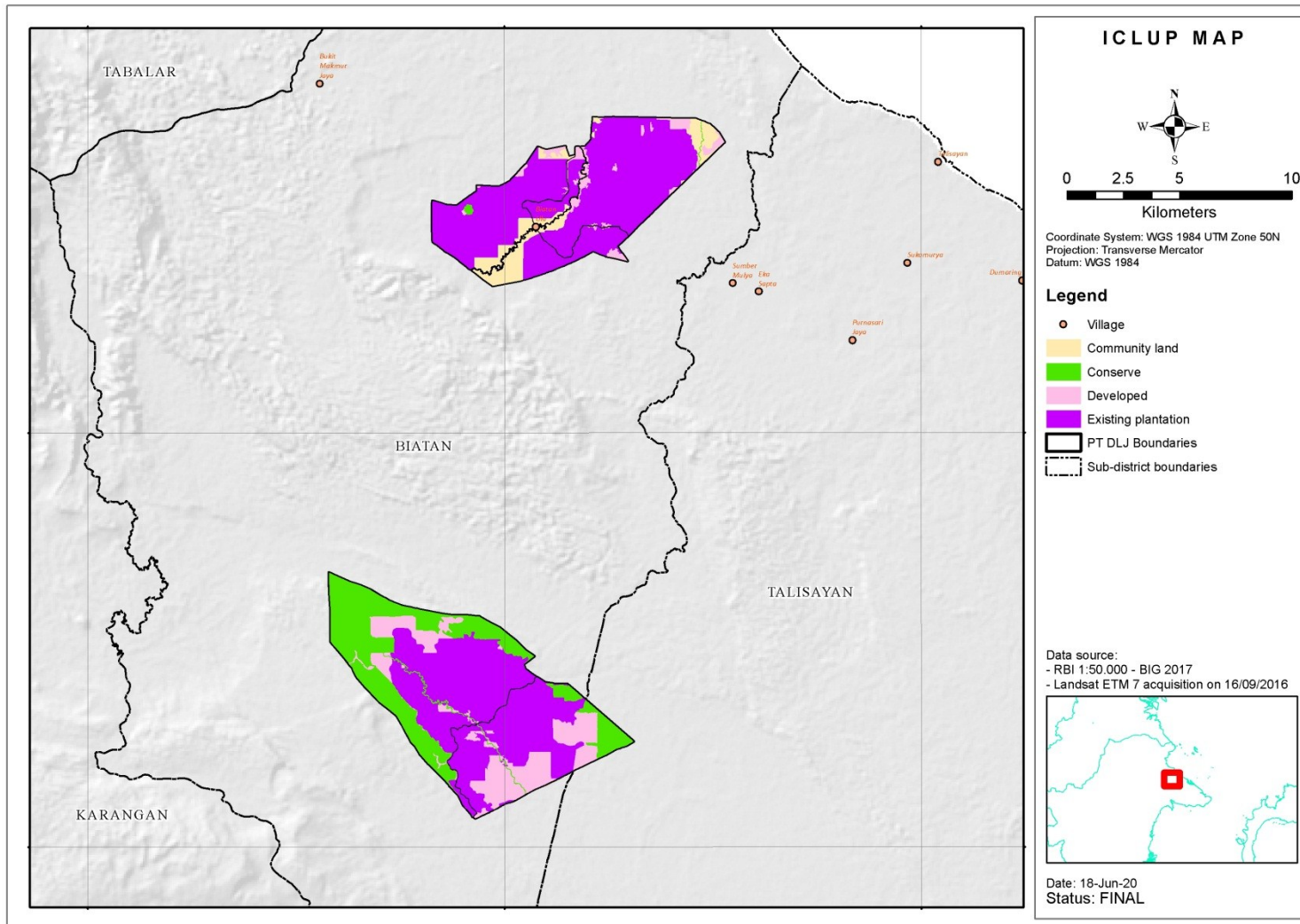
In the reporting for peer review process, PT DLJ HCSA report is adjusted to the current HCSA toolkit ver.2, so the report still has some shortcomings to be revised. In line with the results of the review, all of these shortcomings issue can be solved by submitting some additional documents and relevant field datas, especially in regards to social issues and forest inventory plots in accordance with the recommendations of the reviewer.

Furthermore, in regards to land ownership, all land developed by PT DLJ is a state-owned forest reserve, where there is no community land ownership. The land owned by the community within PT DLJ's HGU area, remains to be managed by the community until now. This is evidence that there is no conflict over land ownership in the PT DLJ area.

In regard to the reviewer recommendations related to the planned land relinquishment from the HGU, PT DLJ has reviewed this subject and concluded to protect the HCSA recommended areas and keep it under PT DLJ management for Integrated Conservation Land Use Plan (ICLUP).



PT DWIWIRA LESTARI JAYA



Maps of PT Dwiwira Lestari Jaya Integrated Conservation Land Use Plan (ICLUP)